

2024 Race #3



**2833 West-Buffalo Springs
Hwy
Buffalo, SC**

November. 6, 2024

2833 West-Buffalo Springs Hwy, Buffalo, SC

The property at 2788 West-Buffalo Springs Hwy in Buffalo has generously been developed to host private events for organizations such as NICA and the SCICL. You'll enjoy the twists and turns of this flowy course and no doubt be challenged by it's punchy climbs!

Areas off-limits to event attendees

The motocross course and all other trails are off limits to SCICL families and our constituency.



Address

2833 West-Buffalo Springs Hwy, Buffalo, SC

Enter between the white fences and head straight up the hill

Parking

- Onsite parking in designated areas only
- Those camping onsite in designated Camping/Parking areas please be mindful of additional guests arriving late. Please don't use more parking/camping space than you need for your group.
- Vehicles must use the designated loading/unloading zone and immediately move to designated parking areas after unloading at the Pit Zone area

Registration

- Students must be league registered and “race-ready” in order to participate
- REUSE YOUR RACE PLATE! Students have received a race plate for the race series to be used for all races. It is your responsibility to keep track of it. Race plates have chips on the back and require care to avoid damage. Do NOT leave your race plate on your bike when transporting it on a bike rack. There is a \$25 fee to replace race plates if lost or forgotten. Replacement plates are at the registration tent.

Volunteering at our Events

Race day would not be possible without the incredible work of our volunteers. It takes a village to put on quality youth mountain bike races. Many parents and cycling enthusiasts find that getting involved with our events is a fun and rewarding experience.

[CLICK HERE TO REGISTER AS A VOLUNTEER](#)

We know some positions can look complex and possibly overwhelming for first-time volunteers. Rest assured ALL of our volunteer positions are fun and require no previous experience and our Core Race Staff is with you every step of the way. You will feel confident and well prepared for your task.

View volunteer training videos [HERE](#)

Course marshals get to be on course and be part of the action! We also need sweepers to ride the course and make sure no students are left behind! Please contact

Curt Kurz-Edsall (curt@southcarolinamtb.org) for volunteer opportunities that suit you!



NICA

Event Weekend Schedule

Saturday

- 9:00 AM** Volunteer Shifts Begin
- 10:30 AM** Pit Zone Access Open
- 11:00 AM** Registration Opens
- 11:30 AM** Coaches Meeting
- 12:00 PM** Coaches Only Pre-ride
- 1:00 PM** *NICA GRiT Ride - meet at the NICA GRiT Tent
- 1:45 PM** Middle School Only Pre-ride
- 2:30 PM** Pre-Ride Open to All Riders
- 4:00 PM** Pre-Ride Closed - (No riders allowed on course after pre-ride is closed)
- 5:30 PM** [Tailgating and Chili contest in Team Pit Zone](#)

*Everyone on course must have a race plate (student, coach, league staff) affixed to their bikes.

Sunday

- 6:45 AM** Volunteer Shifts Begin
- 7:00 AM** Registration /Pitzone Opens
- 7:30 AM** *Pre-Ride Open to all riders
- 8:30 AM** Pre-Ride Closed
- 8:30 AM** Head Coaches Meeting
- 9:10 AM** Staging - Wave 1 MS Boys
- 9:30 AM** Racing Begins
- 10:10 AM** Staging - Wave 2 Girls
- 11:30 AM** Registration Closes
- 12:10 PM** Staging - Wave 3 HS Boys
- 2:00 PM** Racing Concludes
- 2:30 PM** Pit Zone opens for tear down (after course tear down)
- 3:00 PM** Awards Ceremony

Pit Zone Information and NICA Rules

- Pit Zone areas will be pre-marked by team; larger teams get more space; associated teams will be adjacent to one another.
 - Pit Zone is open for loading/unloading Saturday: 10:30am
 - No bike riding in Pit Zone - strictly enforced
- Garbage expectations - Bagged Trash can be placed in dumpster provided
- Grilling allowed on a contained stove.
- No inappropriate language allowed
- Consider staying for awards to support your teammates
- Athletes only & ONE Coach per team in the staging area - Parents and Coaches should head to the race start spectating fan zone
- Teams must remove all garbage from Pit Zone and camping areas whether or not a dumpster is on site
- No Smoking, Alcohol, BBQ's or open flames in Pit Zone
- Dogs must be on leash and under control at all times
- Conflicts and/or disputes should not be dealt with in the team Pit Zone area
- Any violation of the above rules may result in a team penalty and/or expulsion from the Pit Zone and infield area

Pre-Ride

Pre-Ride Hours Saturday:

Coaches Only Pre-Ride 12:00

GRiT 1:00PM

Middle School Only 1:45 PM

Open to All Riders 2:30 PM

All racers should pre-ride the course

Pre-ride is for course assessment and NOT for race pace riding.

TO BE ON COURSE ALL RIDERS (STUDENTS & REGISTERED COACHES) must be fully practice ready in the Pit Zone and have their number plates affixed to their bike

NO UNREGISTERED PARENTS/SIBLINGS ALLOWED ON COURSE

Wave Start Times

STAGING will begin 20 minutes before each wave.

Note: Final lap count decision per category will be finalized and confirmed at the start of each race in addition to any lap cut-off times. Staging for all races begins 20 minutes prior to the wave start.

Wave 1: Middle School Boys

CATEGORY (NUMBER SERIES)	START TIME	LAP COUNT	RACE PLATE COLOR
AMS Boys (8000's)	9:30 AM	2	Orange
8th Grade Boys (1000's)	9:32 AM	1	Red
7th Grade Boys (2000's)	9:34 AM	1	Blue
6th Grade Boys (3000's)	9:36 AM	1	Yellow

Wave 2: Girls

CATEGORY (NUMBER SERIES)	START TIME	LAP COUNT	RACE PLATE COLOR
Varsity Girls (1-49)	10:30 AM	3	Red
JV Girls (100's)	10:32 AM	3	Blue
Sophomore Girls (400's)	10:34 AM	2	Yellow
Freshman Girls (700's)	10:36 AM	2	Green
AMS Girls (7000's)	10:38 AM	2	Orange
8th Grade Girls (4000's)	10:40 AM	1	Red
7th Grade Girls (5000's)	10:42 AM	1	Red
6th Grade Girls (6000's)	10:44 AM	1	Yellow



NICA

Wave 3: High School Boys

CATEGORY (NUMBER SERIES)	START TIME	LAP COUNT	RACE PLATE COLOR
Varsity Boys (50-99)	12:30 PM	4	Red
JV Boys (300's)	12:32 PM	3	Blue
Sophomore Boys (500's)	12:34 PM	3	Yellow
Freshman Boys (900's)	12:36 PM	2	Green

Staging

STAGING will begin 20 minutes before each wave. All riders must be in the staging area on time.

Chip Timing Info

All riders will receive a permanent number plate with chip timing transponder on the backside. Riders will use the same plate for the entire race series, so please remove this number plate before transporting your bike on a vehicle. **Replacement number plates will be available at the registration tent for \$25.00**

Petitions for Category Placement

- No race day petitions will be accepted
- [Petitions](#) to category up found [HERE](#)

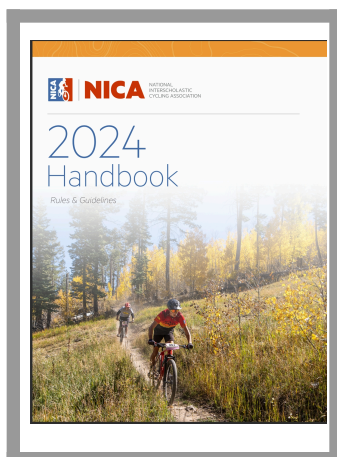
Refund/Weather Policy

Our primary considerations are the safety of riders, support staff and spectators, and potential damage to the venue and trails. Any decisions regarding canceling, postponing or altering race start times, lap lengths, number of laps, etc. will be made jointly by league staff and the land manager. Often this decision cannot be made until the morning of the race due to the unpredictable and rapidly changing nature of severe weather. The league will make every attempt to notify the racing population as soon as possible via email, social media and website updates. The South Carolina League strives to put on world class events and provide all of our constituents with the best resources possible. To achieve the best resources, we make a financial investment to cover insurance, training, and planning activities. Those expenses are continuously incurred and are only partially covered by the participation fees into the league. In order to maintain the sustainability of the South Carolina Interscholastic Cycling League, it is necessary we adhere to our NO-REFUND policy.

We greatly appreciate you being a part of our family and look forward to seeing you at the next event.

Handbook: **NICA** Policies and Rules

All participants are required to read, understand and abide by all league policies, rules and protocols while attending any league event.



SCICL - NICA Race Duration Guidelines

Riders will complete laps with the following Race Duration Guidelines for each category:

- <45 mins for Middle School
- 45-90 mins for freshman/soph boys/girls and JV girls
- 60-100 mins for JV boys and Varsity girls
- 90-120 mins for Varsity boys

- Student athletes may be asked to withdraw at the finish line after cut off time limits have been reached.
- Race officials reserve the right to determine these time limits at any time.
- Time limits may be imposed for reasons that include, among others: safety, heat, cold, rain, and muddy conditions.
- Course closures may be announced at any time.
- Racers who do not make the time limit cut-off will still be scored and ranked.
- Due to weather or course closures, these duration guidelines may be changed at league discretion.

Coaches Meeting

A mandatory head coaches meeting will be held the observation tower at 8:30am on Sunday

Each team must have ONE representative present at the meeting.



NICA

Camping and Lodging

Primitive overnight camping will be offered to you at no additional cost.

- No charge for primitive camping
- RVs and “boon dockers” are welcome at no cost. **NO POWER or WATER SITES**
- Parental supervision required for all campers, no exceptions. League staff and team coaches are not responsible for student athletes outside of NICA sanctioned pre-rides and NICA sanctioned race day events.
- Propane grills and stoves allowed as consistent with current local fire restrictions
- Trash can go in the dumpster provided
- Port-a-johns will be provided

Hotels:

Quality Inn, Union & Clinton
Comfort Suites, Clinton

Days Inn, Union & Clinton
Rodeway Inn, Union


Food Service

On-Site Food Vendor to be Announced.



NICA

Theme Weekend : Tailgating and Chili Contest

Let's have a little fun this race weekend with some tailgating, watching football and a chili contest. Come out and wear your favorite college team gear to help support them. This will take place after the pre-rides on Saturday in the Pit Zone starting at 5:30 PM. Each race team is allowed one chili entry and will be judged by our league core staff. If a core staff member is wanting to participate in the chili contest they will not be allowed to judge. The categories will be spicy, savory, vegetarian and white chili. Winners will be presented with a certificate of winning and will have the bragging rights until next year. This is just for fun and not mandatory. Lets root on our favorite football teams. 

Contact Information

General League Questions:

Curt Kurz-Edsall, League Director, curt@southcarolinamtb.org

Race/Venue Specific Questions:

John Cardozo or Lee Isenbarg, Race Day Operations


John@southcarolinamtb.org, Lee@southcarolinamtb.org

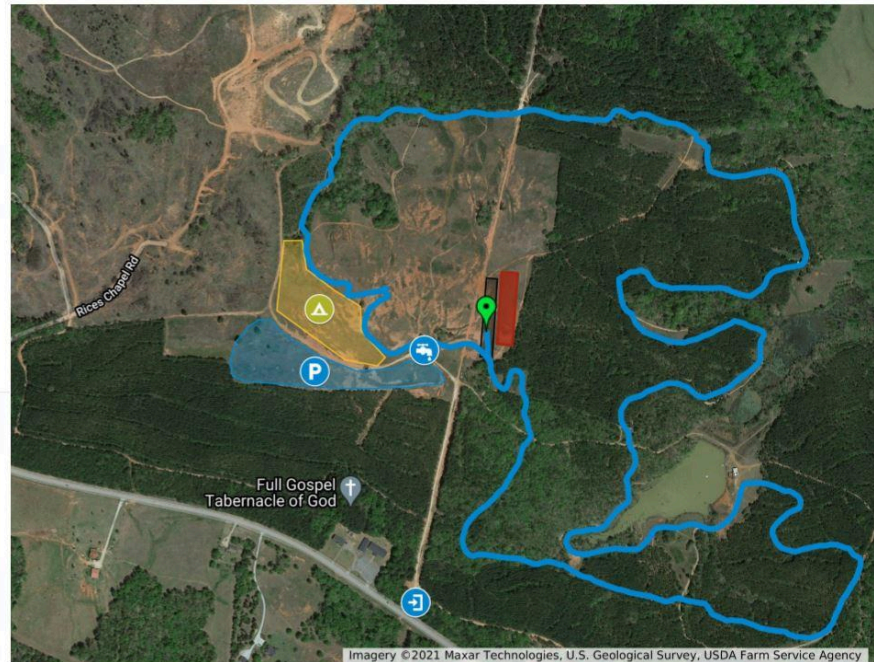
Please note that most staff arrive onsite Thursday or Friday of each race weekend and may not have sufficient cell/data coverage to respond to calls/emails. Please plan accordingly.

Venue Map

Buffalo Race Course

Buffalo NICA race course



-  Start of Buffalo NICA race course
-  Buffalo NICA race course
-  Parking
-  Start Finish
-  Parking
-  Camping
-  Camping
-  Water
-  Pitzone
-  Entrance

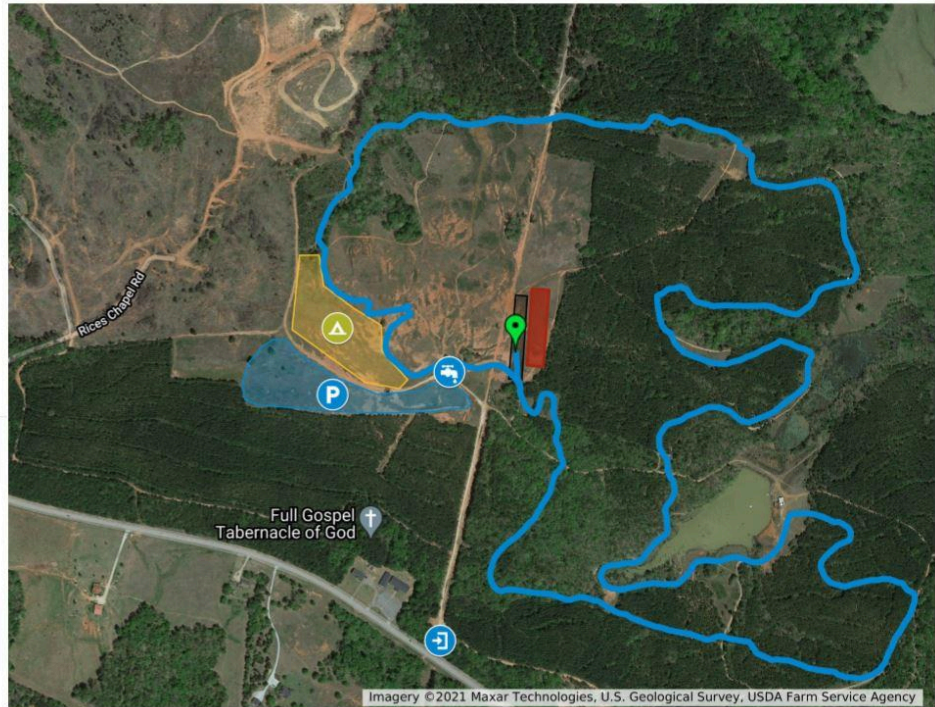


Course Map

Buffalo Race Course

Buffalo NICA race course

-  Start of Buffalo NICA race course
-  Buffalo NICA race course
-  Parking
-  Start Finish
-  Parking
-  Camping
-  Camping
-  Water
-  Pitzone
-  Entrance





LEAGUE SPONSORS



NICA NATIONAL SPONSORS

LEAD SPONSOR



PLATINUM SPONSORS



GOLD SPONSORS



SILVER SPONSORS



BRONZE SPONSORS



NICA NATIONAL FOUNDATION PARTNERS





NICA Safety Reporting and Insurance Coverage

Safety Reporting

Incident reports are mandatory whenever a student athlete or coach is injured during a NICA activity. These incident reports are submitted by each Team's Designated Reporter or an independent rider's parent. For more information on Safety Reporting reporting please see our [brochure here](#).

Insurance Coverage

NICA Insurance coverage is for registered student-athletes and registered coaches injured while participating in the sanctioned pre-ride and race events.

For more information on NICA Insurance Coverage, please see our [FAQ here](#).

The South Carolina Interscholastic Cycling League is a Project League of the National Interscholastic Cycling Association, a 501(c)(3) non-profit youth development organization, guided by the core values of fun, inclusivity, equity, respect and community. The league promotes interscholastic mountain bike racing, provides training and education to new teams and coaches, and offers a comprehensive infrastructure to grow youth cycling in a professional, safe and engaging manner.